

CERTIFIED LAND CORNER RECORDATION

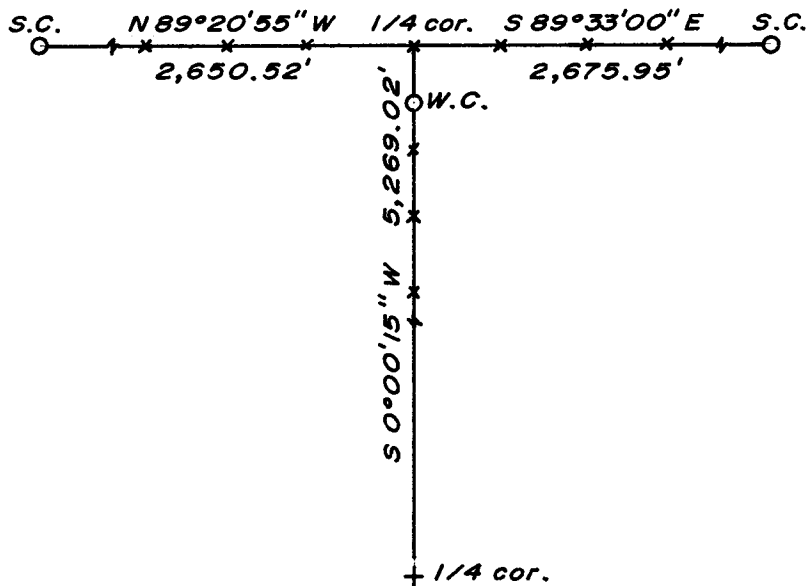
DESCRIPTION OF CORNER EVIDENCE FOUND, AND ORIGINAL RECORD (If known)

LOCATION G.L.O. stone with "1/4" found lying alongside of RR tie fence corner post.
 Obliterated corner - RR tie accepted as marking the corner.
 1/4 S.23
 1/4 S.26 G.L.O. record - Granite Boulder 18 x 10 x 8; John B. Thomas, 1870.
 T.15N., R.67W.
 6th P.M.

DESCRIPTION OF MONUMENT AND ACCESSORIES ESTABLISHED
 TO PERPETUATE THE ORIGINAL LOCATION OF THIS CORNER:

At the corner: Set 40d nail in top of RR tie fence corner post.
 Accessories: A 1 1/2" dia. x 30" long (concrete-filled) iron pipe with brass cap, set and stamped as a witness corner, bears S 0°00'15" W, 3.00 feet distant.
 Left stone as found, not replanted.

SKETCH, WITH COURSE AND DISTANCE TO ADJACENT CORNER IF DETERMINED IN THIS SURVEY.
 (May Sketch or Paste Reproduction on Reverse Side.)



Brass cap set 4" above ground.
 Brass cap stamped:
 T.15N. R.67W.
 1/4 S. 23
 S. 26 W.C.
 LS 519 1974

I, R.L. Hudson certify that I have carefully performed or reviewed the work done on the diagrammed corner as reported on this recordation form and approve the same.

R.L. Hudson Wyoming L.S. No. 519
 Signature of Surveyor Registration No.

STATE OF WYOMING,
 Office of Clerk and Recorder,
 County of Saramie

This "corner record" was filed for record on the 24 day of June, 1974, was noted on the cross-index plat and is assigned page No. _____, in book No. _____.

John B. Husman
 County Official

Cross Index No. <u>R 19</u>	T. <u>15</u>	R. <u>67</u>	<u>6</u> Mer.
_____	T. _____	R. _____	Mer.
_____	T. _____	R. _____	Mer.
_____	T. _____	R. _____	Mer.
_____	T. _____	R. _____	Mer.
_____	T. _____	R. _____	Mer.
_____	T. _____	R. _____	Mer.

Photographed

Indexed RB

Posted

Assessor

The State of Wyoming }
 County of Laramie } ss

This instrument was filed for record
 at 1051 o'clock 4 M. on the
24 day of June
 A. D. 19 24 and duly recorded in
 Book _____ on page _____

John B. Williams

County Clerk & Ex-Officio Registrar of Deeds
 By RB Deputy